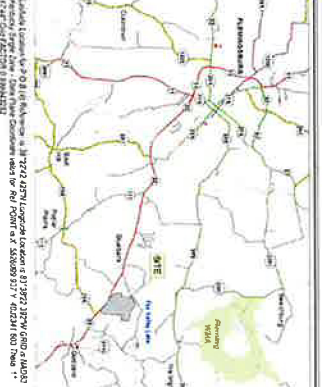


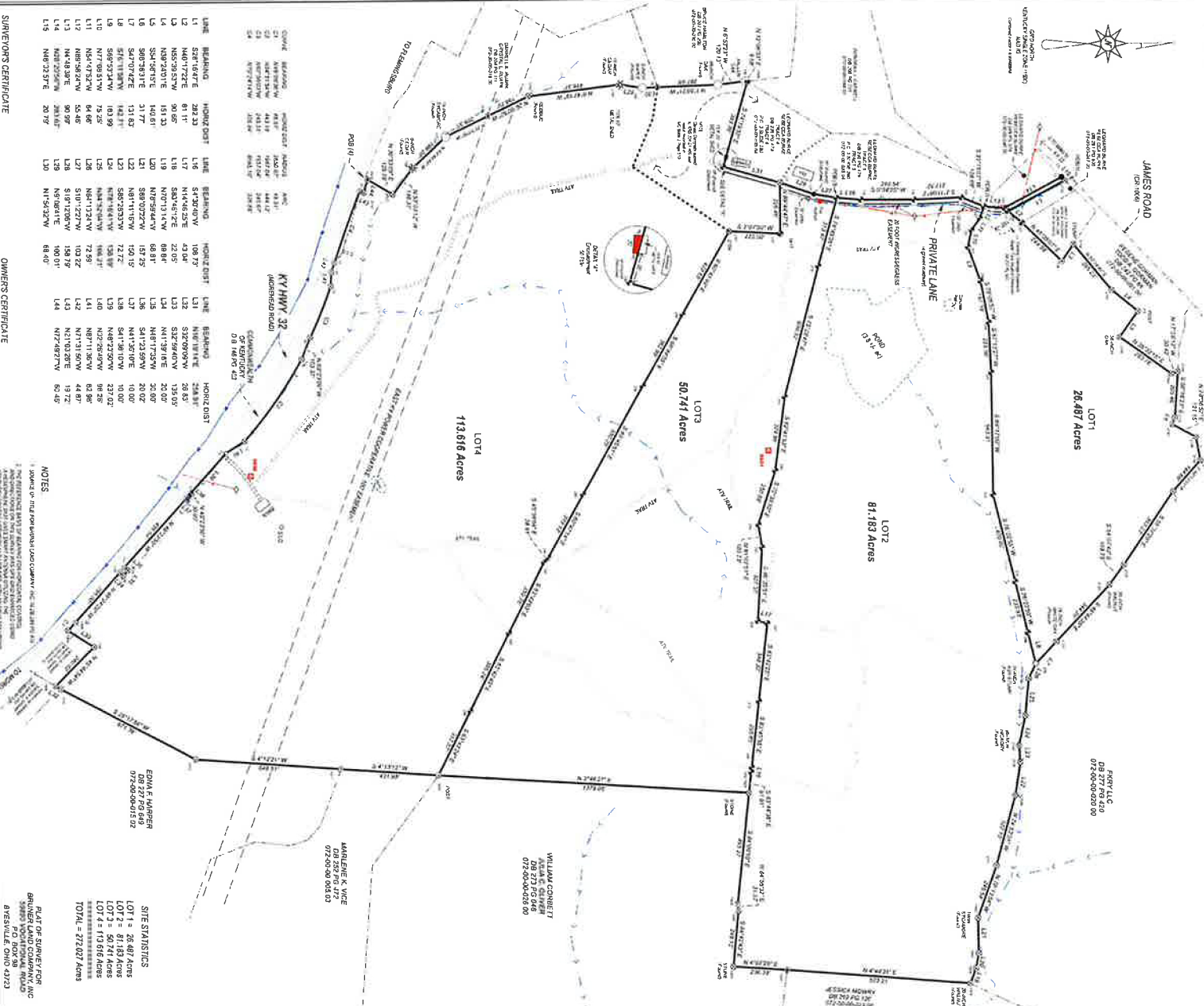
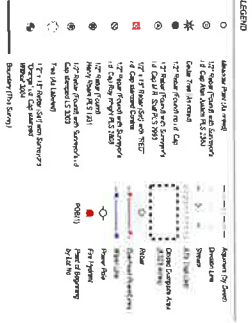
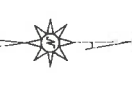
**BRUNER-BLUEBANKS FARMS SUBDIVISIONS**

**9071 MOREHEAD ROAD  
FLEMINGSBURG, KY. 41041**



GRAPHIC SCALE IN FEET

DANIEL MATHIAS  
LAND SURVEYOR  
073-000-0781  
11-71-197'E  
1057.91'



**LOT 1  
28.487 Acres**

**LOT 2  
81.183 Acres**

**LOT 3  
50.741 Acres**

**LOT 4  
113.616 Acres**

LINE	BEARING	HORIZ DIST	LINE	BEARING	HORIZ DIST
L1	S21°47'47"E	232.33	L16	S1°38'40"W	108.77
L2	N40°17'27"E	81.11	L17	N14°46'52"E	43.04
L3	N55°35'25"W	90.65	L18	S83°45'12"E	22.05
L4	N62°41'14"E	96.13	L19	N10°58'24"W	86.81
L5	S54°58'51"E	140.81	L20	N10°58'24"W	86.81
L6	S90°39'31"E	31.77	L21	S89°00'22"W	19.75
L7	S47°07'42"E	131.63	L22	N81°14'11"W	120.15
L8	S76°11'11"W	143.11	L23	S85°35'33"W	72.17
L9	S69°53'24"W	103.99	L24	N72°04'44"W	190.99
L10	N77°03'51"W	73.52	L25	N84°15'55"W	72.99
L11	N75°53'14"W	88.41	L26	N87°15'55"W	65.38
L12	N88°28'34"W	55.46	L27	S10°12'27"W	103.22
L13	N4°48'39"E	90.97	L28	S19°12'08"W	158.79
L14	N67°09'11"E	194.67	L29	N5°09'41"E	100.01
L15	N86°23'57"E	20.77	L30	N1°54'32"W	68.40

LINE	BEARING	HORIZ DIST	LINE	BEARING	HORIZ DIST
L31	N10°17'41"E	248.81	L32	S32°09'09"W	28.83
L33	S32°09'09"W	28.83	L34	S32°09'09"W	28.83
L35	S81°25'41"W	133.05	L36	N81°25'41"W	133.05
L37	N13°40'02"W	20.02	L38	S41°23'59"W	20.02
L39	S41°23'59"W	20.02	L40	N87°09'10"W	10.00
L41	N87°09'10"W	10.00	L42	N87°09'10"W	23.02
L43	N67°09'10"W	44.87	L44	N71°13'56"W	44.87
L45	N71°13'56"W	44.87	L46	N71°13'56"W	19.72
L47	N71°13'56"W	19.72	L48	N71°13'56"W	19.72
L49	N71°13'56"W	19.72	L50	N71°13'56"W	19.72
L51	N71°13'56"W	19.72	L52	N71°13'56"W	19.72
L53	N71°13'56"W	19.72	L54	N71°13'56"W	19.72
L55	N71°13'56"W	19.72	L56	N71°13'56"W	19.72
L57	N71°13'56"W	19.72	L58	N71°13'56"W	19.72
L59	N71°13'56"W	19.72	L60	N71°13'56"W	19.72
L61	N71°13'56"W	19.72	L62	N71°13'56"W	19.72
L63	N71°13'56"W	19.72	L64	N71°13'56"W	19.72
L65	N71°13'56"W	19.72	L66	N71°13'56"W	19.72
L67	N71°13'56"W	19.72	L68	N71°13'56"W	19.72
L69	N71°13'56"W	19.72	L70	N71°13'56"W	19.72
L71	N71°13'56"W	19.72	L72	N71°13'56"W	19.72
L73	N71°13'56"W	19.72	L74	N71°13'56"W	19.72
L75	N71°13'56"W	19.72	L76	N71°13'56"W	19.72
L77	N71°13'56"W	19.72	L78	N71°13'56"W	19.72
L79	N71°13'56"W	19.72	L80	N71°13'56"W	19.72
L81	N71°13'56"W	19.72	L82	N71°13'56"W	19.72
L83	N71°13'56"W	19.72	L84	N71°13'56"W	19.72
L85	N71°13'56"W	19.72	L86	N71°13'56"W	19.72
L87	N71°13'56"W	19.72	L88	N71°13'56"W	19.72
L89	N71°13'56"W	19.72	L90	N71°13'56"W	19.72
L91	N71°13'56"W	19.72	L92	N71°13'56"W	19.72
L93	N71°13'56"W	19.72	L94	N71°13'56"W	19.72
L95	N71°13'56"W	19.72	L96	N71°13'56"W	19.72
L97	N71°13'56"W	19.72	L98	N71°13'56"W	19.72
L99	N71°13'56"W	19.72	L100	N71°13'56"W	19.72

**NOTES**

SOME OF THE PROPERTY LINES SHOWN ON THIS MAP WERE OBTAINED FROM AERIAL PHOTOGRAPHS AND ARE NOT NECESSARILY ACCURATE. THE PROPERTY LINES SHOWN ON THIS MAP ARE BASED ON THE RECORD DEEDS AND SURVEYS REFERRED TO IN THE NOTES AND ARE NOT NECESSARILY ACCURATE.

**FORM 5 ADDRESS**  
073-000-0415 92

**SITE STATISTICS**  
LOT 1 = 28.487 Acres  
LOT 2 = 81.183 Acres  
LOT 3 = 50.741 Acres  
LOT 4 = 113.616 Acres  
TOTAL = 272.027 Acres

**PLAT OF SUBDIVISION**  
**BRUNER LAND COMPANY, INC.**  
59899 RD. BOX 48  
BRESVILLE OHIO 43213

**WILLIAM CORBETT**  
08235 PG 173  
073-000-0533 00

**MARGUERITE N VICE**  
08235 PG 175  
073-000-0533 00

**THE TABLE**  
DATE: 11/21/2018  
TIME: 11:13:00 AM  
FILE: 20181121\_111300\_001.DWG  
DRAWN BY: R. J. BRYAN  
CHECKED BY: R. J. BRYAN  
SCALE: AS SHOWN