

Longitude Location is 84°
 Plane Coordinate value
 Theta: 0°54'59" Grid

GRAPHICAL SCALE: 1 INCH = 300 FEET

TOTAL AREA: 112.473 ACRES

SURVEYOR'S NOTES:

1. SOURCE OF TITLE FOR BRUNER LAND COMPANY, INC. IN DB.373 PG 313
2. THE REFERENCE BASIS OF BEARING FOR HORIZONTAL CONTROL AND DIRECTIONS ON THIS SURVEY WAS GPS GRID ENHANCED USING A HEMISPHERE S321+ RECEIVER (SERIAL # 19085450) UTILIZING THE KENTUCKY COORDS NETWORK. THE TYPE OF SURVEY WAS RTK BASE/ROVER UTILIZING FIELDGENUIS SOFTWARE TIME FIXED SOLUTIONS.
3. IN PROVIDING THIS BOUNDARY SURVEY NO ATTEMPT HAS BEEN MADE TO OBTAIN OR SHOW DATA CONCERNING EXISTENCE, SIZE, DEPTH, CONDITION, CAPACITY OF LOCATION OF ANY UTILITY EXISTING ON SITE, WHETHER PRIVATE, MUNICIPAL OR PUBLIC OWNED.
4. ALL MONUMENTS FOUND AND ESTABLISHED BY GPS - FIXED POSITION WITHIN 0.03' USING FIELDGENUIS 11+ SOFTWARE USING A HEMISPHERE GNSS - S321+
5. THE TYPE OF EQUIPMENT USED TO OBTAIN THE LINEAR AND ANGULAR MEASUREMENT USED IN THE PREPARATION AND CHECK GPS MEASUREMENTS OF SAID MAP OR PLAT IS A TOPCON GTS-903A ROBOTIC TOTAL STATIONS, BY METHOD OF RANDOM TRAVERSE WITH SIDESHOTS.
6. BOUNDARY SURVEY AND SUBDIVISION COMPLETED MAY 14, 2022.

ZONE - AGRICULTURAL - A1
 BUILDING SETBACK
 FRONT - 50 FEET
 BUILDING SETBACK - 50 FEET
 SIDE - 20 FEET
 REAR - 20 FEET
 DEDICATED R/W - 20 FEET

PLAT PURPOSE:

1. PURPOSE OF PLAT IS TO DOCUMENT THE RESULTS OF A FIELD SURVEY CONDUCTED TO LOCATE AND/OR MONUMENT THE BOUNDARY CORNERS OF BRUNER LAND COMPANY, INC. AS DESCRIBED IN DEED BOOK 373 PAGE 313 AT THE HARRISON COUNTY CLERK'S OFFICE IN CYNTHIANA, KENTUCKY AND TO ILLUSTRATE A SUBDIVISION OF FOUR (4) LOTS OF THE BRUNER LAND COMPANY, INC. AS SHOWN HEREON.
2. SHOW LOCATIONS OF EXISTING MONUMENTS AND ADJOINERS INFORMATION
3. TO ACCURATELY DESCRIBE BY PLAT THE PROPERTY LOCATED BY THE SURVEY

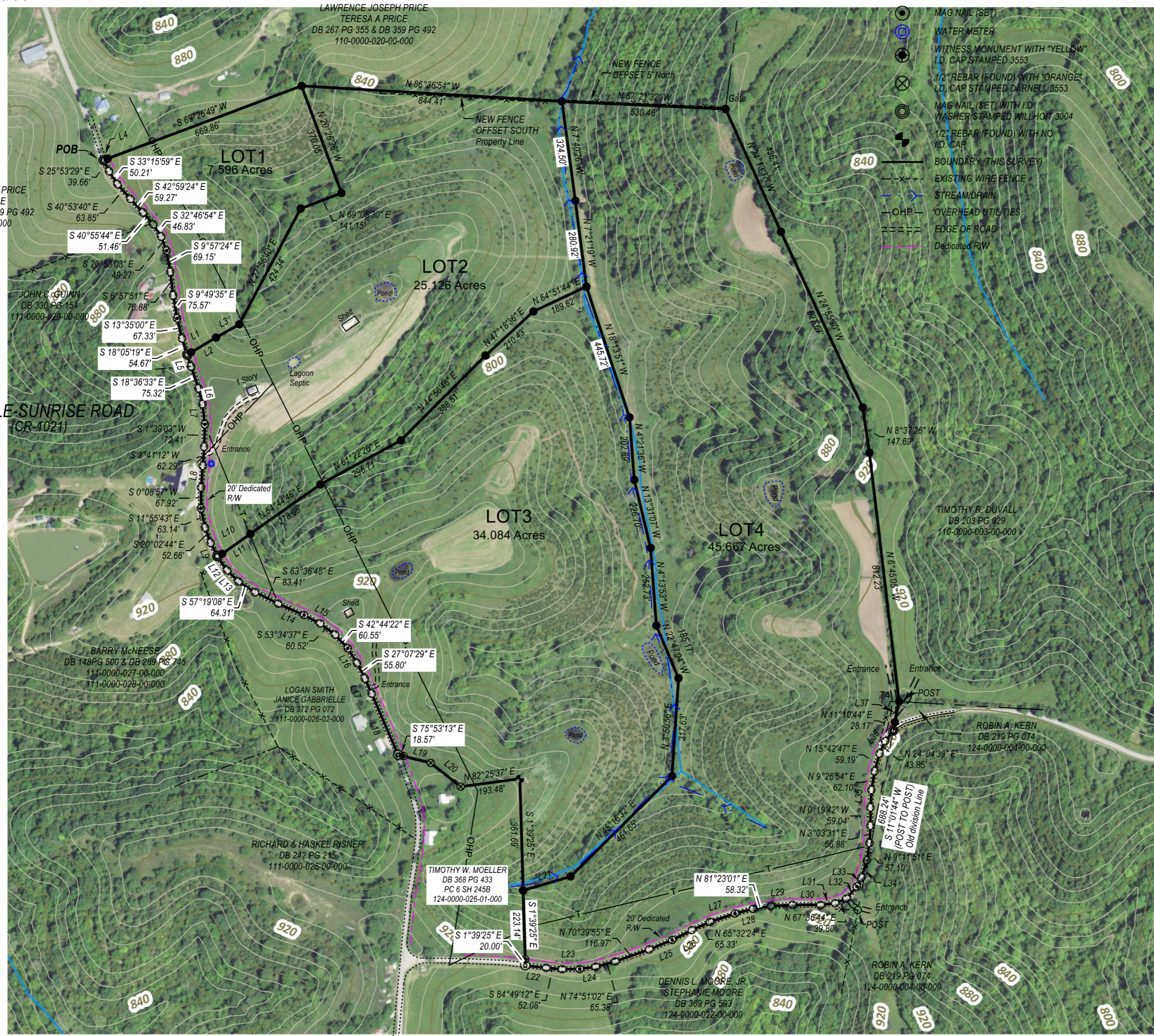
PLAT OF SURVEY FOR:
 BRUNER LAND COMPANY, INC.
 59890 VOCATIONAL ROAD
 P.O. BOX 98
 BYESVILLE, OHIO, 43723

FILE NAME		
BRUNER_ODDVILLE_LOTS.trv		
SCALE	DATE	DRAWN BY
300 Ft/In	5-15-2022	RFW
JOB	MAP REFERENCE:	
22-3004-166	111-0000-026-00-000	

SURVEY BY:
 RONALD F. WILLHOIT, PLS
 307 HIAWATHA TRAIL - FRANKFORT, KY. 40601

SURVEY PLAT REPRESENTS A BOUNDARY SURVEY AND COMPLIES WITH 201 KAR 18-150

- LEGEND**
- ANGLE POINT
 - ⊙ MAG NAIL (FOUND)
 - 1/2" X 18" REBAR (SET) WITH "ORANGE" I.D. CAP STAMPED WILLHOIT 3004
 - ⊙ MAG NAIL (SET)
 - ⊙ WATER METER
 - ⊙ WITNESS MONUMENT WITH "YELLOW" I.D. CAP STAMPED 3553
 - ⊙ 1/2" REBAR (FOUND) WITH "ORANGE" I.D. CAP STAMPED DARNELL 3553
 - ⊙ MAG NAIL (SET) WITH I.D. WASHER STAMPED WILLHOIT 3004
 - ⊙ 1/2" REBAR (FOUND) WITH NO I.D. CAP
 - ⊙ BOUNDARY (THIS SURVEY)
 - - - EXISTING WIRE FENCE
 - - - STREAM/DRAIN
 - - - OVERHEAD UTILITIES
 - - - EDGE OF ROAD
 - - - Dedicated R/W



AVENA ROAD
 (CR-1028)