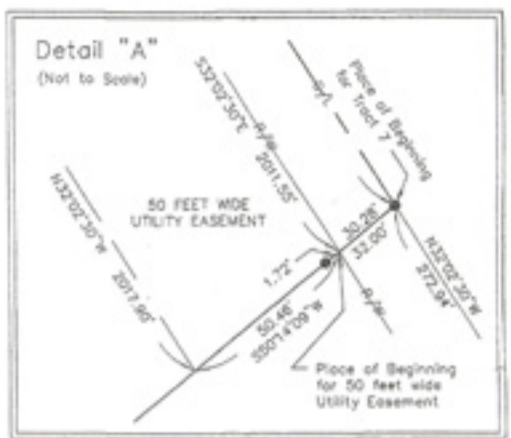
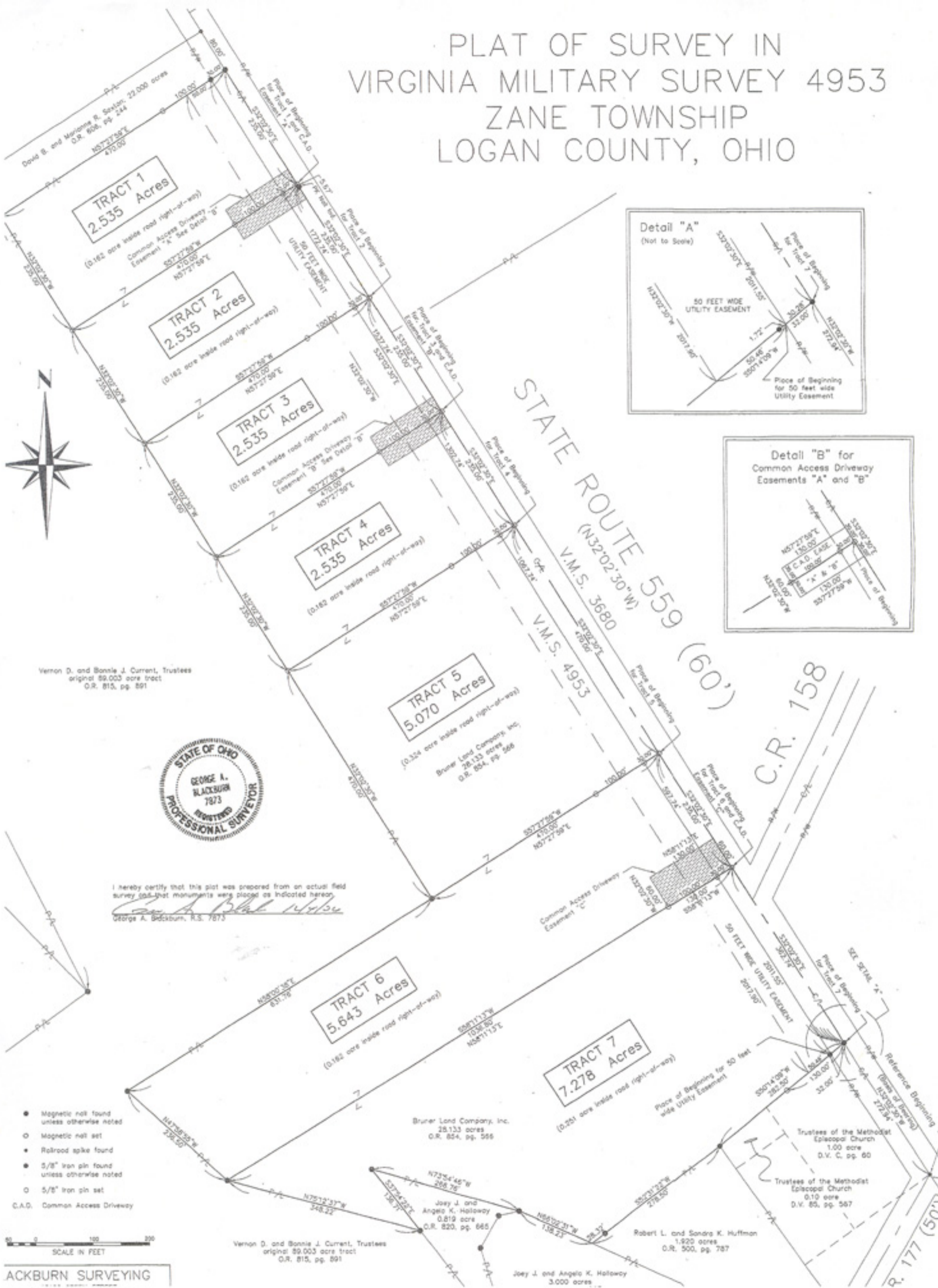


PLAT OF SURVEY IN VIRGINIA MILITARY SURVEY 4953 ZANE TOWNSHIP LOGAN COUNTY, OHIO



Vernon D. and Bonnie J. Current, Trustees
original 89.003 acre tract
O.R. 815, pg. 891



I hereby certify that this plat was prepared from an actual field survey and that monuments were placed as indicated hereon.
George A. Blackburn
George A. Blackburn, R.S. 7873

- Magnetic nail found unless otherwise noted
- Magnetic nail set
- Railroad spike found
- 5/8" iron pin found unless otherwise noted
- 5/8" iron pin set
- C.A.D. Common Access Driveway



ACKBURN SURVEYING

Vernon D. and Bonnie J. Current, Trustees
original 89.003 acre tract
O.R. 815, pg. 891

Brumer Land Company, Inc.
28.133 acres
O.R. 854, pg. 588

Joey J. and Angela K. Holloway
0.819 acre
O.R. 820, pg. 665

Robert L. and Sandra K. Huffman
1.925 acres
O.R. 500, pg. 787

Joey J. and Angela K. Holloway
3.000 acres

Trustees of the Methodist Episcopal Church
1.00 acre
D.V. C. pg. 60

Trustees of the Methodist Episcopal Church
0.10 acre
D.V. 85, pg. 587